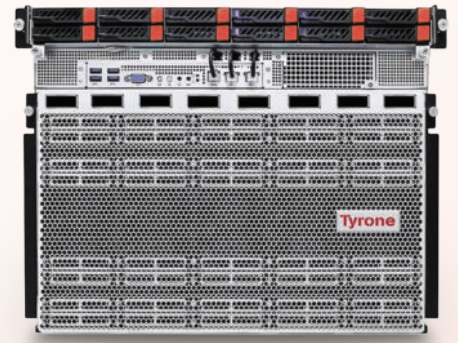
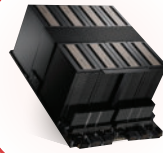


Tyrone Camarero Specifications

Tyrone

Camarero: PDA300A2HG-812



Key Feature

- Supports AMD Dual EPYC 9005/9004 series processors
- NVIDIA HGX B300 8-GPU with NVSwitch
- 8 x OSFP 800 Gbps Infiniband Ports
- Supports 12+12 DDR5 RDIMM Expandable Memory
- 4 x16 PCIe 5.0 Expansion Slots
- Latest AST2600 BMC Controller iKVM, vMedia support
- Support 12 x 2.5" Hot Swappable Bays
- Dual 1GbE(RJ45) via Intel i350-AM2
- (6 + 6) 3000W 80+ Redundant Titanium Power Supply



Processor

Processor Supports Dual Supports AMD EPYC 9005/9004 series Processors of upto 500W TDP (LGA 6096)

System Memory

Supported Memory 12+12 DDR5 RDIMM Expandable Memory

Memory Frequency 6400 MT/s (Depends Upon CPU SKU)

Memory Capacity 128GB/DIMM

Expansion Slot

PCI-Express 4 x16 PCIe 5.0 FHHL single width slots

Drive bays

HDD Bays Supports 12 x 2.5" NVMe Hot Swappable drive Bays
Supports 2 x M.2 PCIe x4 Internal Drives

Environment

Temperature Operation temperature: 10°C ~ 35°C
Non-operation temperature: -40°C ~ 70°C

Humidity Non-operation humidity: 20% ~ 90% (Non condensing)

I/O Ports

I/O Ports 2 x RJ45 1G Base-T via Intel i350-AM2 (Front)
*Same can be accessible from Rear Side as well
1 x RJ45 dedicated IPMI 2.0 LAN port (Front)
*Same can be accessible from Rear Side as well
1 x VGA DB15 Port (Front)
4 x USB 3.0 Type A (Front)
2 x USB 3.0 Type A (Rear)
1 x VGA DB15 Port (Rear)

LEDs / Buttons

LEDs / Buttons 1 x Power button/LED (Front)
1 x Reset button (Front)
1 x UID button (Front/Rear)
1 x System Fault LED (Front)
12 x HDD LEDs (Front)

Security

Security TPM 2.0

Power Supply

Power Supply (6 + 6) 3000W 80+ Redundant Titanium Power Supply

Form Factor

Form Factor 8U Rackmount

Dimensions

Dimensions 448mm x 930mm x 354mm

Email : Info@tyronesystems.com
For more/current product information, Visit
www.tyronesystems.com