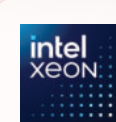
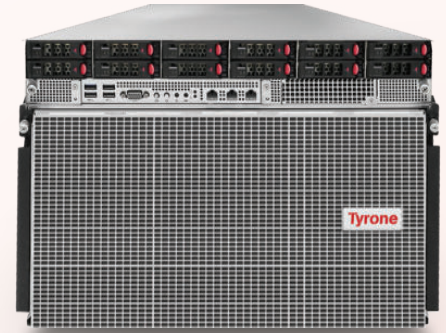
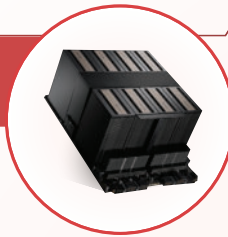


# Tyrone Camarero Specifications

# Tyrone

## Camarero: PDI200A2HG-810



### Key Feature

- Supports Dual 5th/4th Gen Intel Xeon Scalable processors
- NVIDIA HGX B200 8-GPU with NVIDIA NVSwitch™
- Supports 16+16 DDR5 RDIMM Expandable Memory
- 10 x16 PCIe 5.0 Expansion Slots
- Latest AST2600 BMC Controller iKVM, vMedia support
- Support 12 x 2.5" Hot Swappable Bays
- Dual 1GbE(RJ45) via Intel i350-AM2
- (6 + 6) 3000W 80+ Redundant Titanium Power Supply
- 8U Rackmount with Effective Air-cooled mechanism

### Processor

**Processor** Supports Dual 5th/4th Gen Intel Xeon Scalable processors upto 350W TDP (LGA 4677)

### System Memory

**Supported Memory** Supports 16+16 DDR5 RDIMM Expandable Memory

**Memory Frequency** Max 5600 MT/s (1DPC) / 4400 MT/s (2DPC) Frequency (Depends Upon CPU SKU)

**Memory Capacity** Max Capacity RDIMM-3DS : 256GB/DIMM, Max System Memory 8TB

### Expansion Slot

**PCI-Express** 8 x16 PCIe 5.0 HHHL single width slots  
2 x16 PCIe 5.0 FHHL single width slots

### Drive bays

**HDD Bays** Supports 10 x 2.5" NVMe +  
2 x 2.5" SATA Hot Swappable drive Bays  
Supports 2 x M.2 PCIe x4 Internal Drives

### Environment

**Temperature** Operation temperature: 10°C ~ 35°C  
Non-operation temperature: -40°C ~ 70°C

**Humidity** Non-operation humidity: 20% ~ 90% (Non condensing)

### I/O Ports

**I/O Ports** 1 x VGA DB15 Port (Front/Rear)  
4 x USB 3.2 Type A Gen1 (Front)  
2 x USB 3.2 Type A Gen1 (Rear)  
2 x RJ45 1G Base-T via Intel i350-AM2 (Front)\*  
1 x RJ45 dedicated IPMI 2.0 LAN port (Front)\*  
\*Same can be accessible from Rear Side as well

### LEDs / Buttons

**LEDs / Buttons** 1 x Power button/LED (Front)  
1 x Reset button (Front)  
1 x UID button (Front/Rear)  
1 x System Fault LED (Front)  
12 x HDD LEDs (Front)

### Security

**Security** TPM 2.0

### Power Supply

**Power Supply** (6 + 6) 3000W 80+ Redundant Titanium Power Supply

### Form Factor

**Form Factor** 8U Rackmount

### Dimensions

**Dimensions** 448mm x 930mm x 354mm

Email : [Info@tyronesystems.com](mailto:Info@tyronesystems.com)  
For more/current product information, Visit  
[www.tyronesystems.com](http://www.tyronesystems.com)